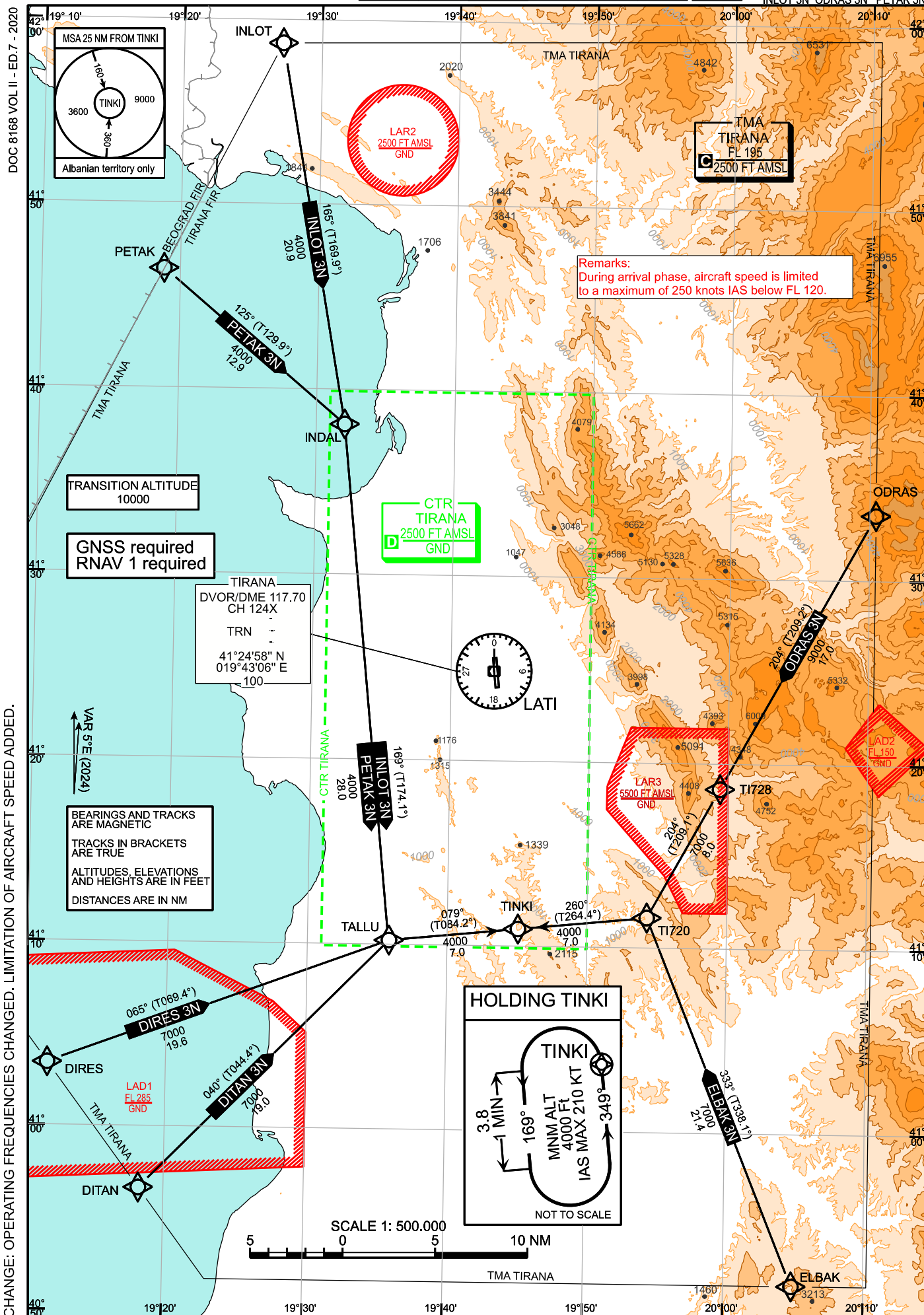


STANDARD ARRIVAL CHART -  
INSTRUMENT (STAR) - ICAOAD ELEV 125 FT  
VAR 5°E

TWR	122.510	APP	133.155	ACC	127.505	ATIS	132.275
	123.510		134.275		134.275		

**TIRANA, LATI**  
 RNAV STAR RWY 35  
 DIRES 3N DITAN 3N ELBAK 3N  
 INLOT 3N ODRAS 3N PETAK 3N



Designator		Route				Remarks			
DIRES 3N Dires three november arrival		DIRES – TALLU – TINKI							
RNAV STAR Coding Table of DIRES 3N									
Path Terminator	Waypoint		Course/ Track ° MAG (° True)	DIST NM	Turn Direction	Constraints		Navigation Specification	Remarks
	Identifier	Flyover				Coordinates	Crossing ALT		
IF	DIRES	no	N410328.00 E0191133.00				F120+		RNAV 1
TF	TALLU	no	N411020.00 E0193551.00	065° (069.4°)	19.6		A7000+		RNAV 1
TF	TINKI	no	N411102.00 E0194504.00	079° (084.2°)	7.0	right	A4000+		RNAV 1

Designator		Route				Remarks
DITAN 3N Ditan three november arrival		DITAN – TALLU – TINKI				

RNAV STAR Coding Table of DITAN 2N						
Path Terminator	Identifier	Waypoint		DIST NM	Turn Direction	Remarks
		Flyover	Coordinates			
IF	DITAN	no	N405644.00 E0191813.00			RNAV 1
TF	TALLU	no	N411020.00 E0193551.00	040° (044.4°)	19.0	RNAV 1
TF	TINKI	no	N411102.00 E0194504.00	079° (084.2°)	7.0	right

Designator		Route				Remarks
ELBAK 3N Elbak three november arrival		ELBAK – TI720 – TINKI				

RNAV STAR Coding Table of ELBAK 3N						
Path Terminator	Identifier	Waypoint		DIST NM	Turn Direction	Remarks
		Flyover	Coordinates			
IF	ELBAK	no	N405151.00 E0200452.00			RNAV 1
TF	TI720	no	N411143.26 E0195417.19	333° (338.1°)	21.4	RNAV 1
TF	TINKI	no	N411102.00 E0194504.00	260° (264.4°)	7.0	left

Path Terminator	Identifier	Inbound Course °M (°T)	Leg Distance (NM) <sup>(c)</sup>	Timing (min.)// Waypoint Distance <sup>(d)</sup>	Turn Direction	Minimum Altitude (FT)	Maximum Altitude (FL)	Speed Limit (kt)	Magnetic Variation (°)	Navigation Specification
HOLD HM	TINKI	349° (354.3°)	3.8	1 min	Left	+4000		210	4.9	RNAV1

Designator		Route				Remarks		
INLOT 3N Inlot three november arrival		INLOT – INDAL – TALLU – TINKI						
RNAV STAR Coding Table of INLOT 3N								
Path Terminator	Waypoint		DIST NM	Turn Direction	Constraints		Navigation Specification	Remarks
	Identifier	Flyover			Coordinates	Crossing ALT		
IF	INLOT	no	N415847.00 E0192711.00			F120+		RNAV 1
TF	INDAL	no	N413813.00 E0193204.00	165° (169.9°)	20.9		A4000+	RNAV 1
TF	TALLU	no	N411020.00 E0193551.00	169° (174.1°)	28.0	right	A4000+	RNAV 1
TF	TINKI	no	N411102.00 E0194504.00	079° (084.2°)	7.0	left	A4000+	RNAV 1

Designator		Route				Remarks
ODRAS 3N Odras three november arrival		ODRAS – TI728 – TI720 – TINKI				

RNAV STAR Coding Table of ODRAS 3N						
Path Terminator	Identifier	Waypoint		DIST NM	Turn Direction	Remarks
		Flyover	Coordinates			
IF	ODRAS	no	N413335.00 E0201027.00			RNAV 1
TF	TI728	no	N411843.10 E0195926.23	204° (209.2°)	17.0	RNAV 1
TF	TI720	no	N411143.26 E0195417.19	204° (209.1°)	8.0	RNAV 1
TF	TINKI	no	N411102.00 E0194504.00	260° (264.4°)	7.0	right

Designator		Route				Remarks
PETAK 3N Petak three november arrival		PETAK – INDAL – TALLU – TINKI				

RNAV STAR Coding Table of PETAK 3N						
Path Terminator	Identifier	Waypoint		DIST NM	Turn Direction	Remarks
		Flyover	Coordinates			
IF	PETAK	no	N414631.00 E0191850.00			RNAV 1
TF	INDAL	no	N413813.00 E0193204.00	125° (129.9°)	12.9	RNAV 1
TF	TALLU	no	N411020.00 E0193551.00	169° (174.1°)	28.0	right
TF	TINKI	no	N411102.00 E0194504.00	079° (084.2°)	7.0	left